

**Term 3 - Week 5****Wednesday 12 August, 2015**

PRINCIPAL'S REPORT

My visit with the **Secretary of the Department of Education** went very well on Friday. I was able to tell her the great things we do here at Falls Creek and discuss with her the student's attitude towards sport and school. Michele went to visit the classrooms to see what was happening. She seemed very impressed with the peacock that has been visiting school and how well it sat in the sandpit while K/1/2 conducted science experiments around it!

We also discussed the way the school measures student achievement and what we are doing to ensure all our students are learning to the best of their ability.

Tell Them From Me Survey: In late term 1 students from Years 4 – 6 took part in a survey about student engagement and their responses have helped us to make some changes in the way we do things. This term there is a second survey for students to complete so we can compare the findings from term 1. Permission notes were sent home yesterday with all students in Years 4 – 6 about the survey. If you do not want your child to participate in this term's survey, please return the attached slip that was sent home yesterday.

As part of the term 3 survey parents and teachers will also have the opportunity to complete a survey. The online parent survey takes about 30 minutes and is completely anonymous. I hope that many of you complete the survey as it will provide us with some valuable feedback on what you think about the school and provide us with directions about how we can improve the school to better meet the needs of the students and parents.

The survey window opens on Monday 17 August and I will be sending information out to parents. A fact sheet is attached with Talkabout to provide you with some more information regarding the survey. If you have any questions please contact me at school.

Pedestrian Crossing: I encourage all parents and carers who drop their children to school or pick

Tickets will be available to purchase early next week.

Uniforms: There are a number of students not wearing the correct school uniform. The uniform instils pride and belonging in our students and helps to build a positive school culture. Could you please ensure your child is wearing the correct uniform to school each day. New and second hand uniforms are available from the office.

Swimming Scheme: Notes were sent home with students in Years 2 – 5 for the swimming scheme lessons in week 7 and 8. Please return permission notes and money to the office. The cost to you covers pool entry as the school is paying for the bus. The total cost is \$22.50 per child.

Berry Excursion for Years 5 & 6: This excursion is to be held in Week 5 of next term (Wednesday 4 – Friday 6 November). The final cost for the excursion is \$240 and this can be paid off in instalments each week, fortnight or month. Invoices were sent home earlier in the year. If you haven't already done so, please start making regular payments to the office.

If you have any questions or concerns, please come and see me.

Nicole

K/1/2 NEWS

We have had a great week with our writing. Most of Year 1 and 2 are up to publishing their power points. Some have started to get feedback from Years 5 and 6 about what is missing and what else they need to add to ensure their work makes sense. Students can't wait to present their power points to parents at the end of the term. We will set a date and send out notes shortly. Kinder are also looking forward to presenting their work as well.

There a quite a few students who have not been returning their home readers for quite a while. Please check at home and ask your children to return readers regularly to help them with their reading. Most stories should only take between 5 – 10 minutes a night.

We are looking at multiplication in Maths this week and we are doing well. Older students are practicing their skip counting by 2s, 5s and 10s and learning to count by 2s, 4s and 6s. This skill

Over the next two weeks we are working on division and multiplication in Maths and we are continuing to work on information texts in English, focusing on key sentences and summarising.

Sam has had a perfect score so far this term in his spelling!! Last week Kiho, Sealisha, Emilly and Sam all scored 100% in their test.

Only 6 children handed in their homework last week so I am expecting a much better effort this Friday. I mentioned Home Readers on the homework sheet as several children still have books at home that they need to return.

As we are going to the Music Festival Practice on Thursday we will not be having a Library lesson however the children can return their books. Last week some children brought home a note about the overdue books they have at home so please try and find them and bring them back to school ASAP.

Keep in touch, Lyn.

5/6 NEWS

This week in 5/6 we are continuing to work on our information reports for English. In Maths we are learning about area and revising our multiplication skills. The big talk in class however, is the Year 5/6 fundraiser next Wednesday. Students are busy designing posters to display around the school for this event. Thank you in advance for parents and guardians who will allow their children to mess up their kitchens as they make some delicious cupcakes for our stall. We have also been continuing with a healthy active lifestyle in Health. Students are learning different resilience strategies and coping mechanisms in addition to learning about making good healthy choices.

Dion

MS CULLEN

Tomorrow all of our Year 3-6 students will be travelling to Nowra East Public School to attend the

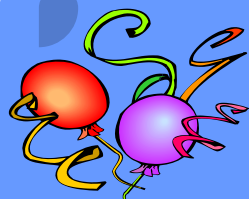
3/4 BUNDANON EXCURSION

On Monday our class went to Bundanon. Tomerong children went on the bus too. We saw Matthew Wallace, he used to go to our school.

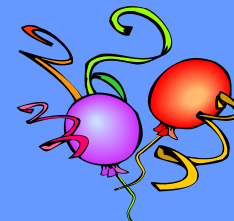
The last part of the trip was fun but also a bit scary because the road was steep and curvy. When we got there we had time to play and sketch around the building. We heard a talk from the artist Tania Mason and the novelist Natalie Walton. They showed us some of their drawings and stories. It was interesting and we got their autographs after the class.

It was a terrific sunny day and the talk and art were amazing. We got back at home time.

Sealisha and Evie



Happy Birthday!



☺Thursday 20 August

Assembly 2:15pm

COMING EVENTS

☺Monday 24 August - Friday 4 September

School Swimming Scheme

☺Thursday 3 September

Shoalhaven Music Festival Performance 7pm

☺Thursday 10 September

P & C Meeting 6:15pm

KINDERGARTEN ENROLMENTS 2016

If you have a child eligible to start school in 2016 could you please contact the school. If you know of any families living in our area who do not have a child currently attending Falls Creek School but are wishing to enrol in 2016 could you please ask them to contact the school.

CANTEEN NEWS**SPECIAL!!**

Red Velvet Cornetto

\$2 each



Unfortunately we have lost a couple of our volunteers due to other commitments. If you (mum, dad, brother, sister, nana, pa or friend) are able to give 4 hours of your time, once a month it would greatly assist in keeping the canteen open twice a week.

MERIT AWARDS

- K/1/2 Dejan Sankovic, Brayden Cullen, Casey Lalor and Blake McDonald.
3/4 Kiho Luke, Emily Bloxsome, Sealisha Buckley and Steven Blume.
5/6 Aaron French, Brodie Partridge, Kameisha Riley-Burnes and Khe-Sanh Duke.

BRIDGE BUILDER AWARDS

- Silver Bailey Cullen.
Gold Elvis Oppong, Thomas Russell and Kiho Luke.

PLAYGROUND STARS WINNERS

Ashleigh Bloxsome, Corey Henkel, Rheya Luke, Layla Ryan
and Tahlia Taylor-Thomas.



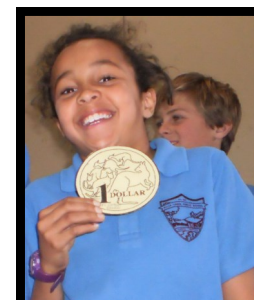
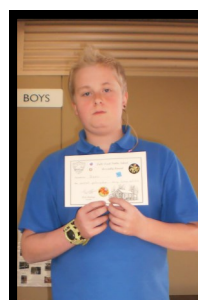
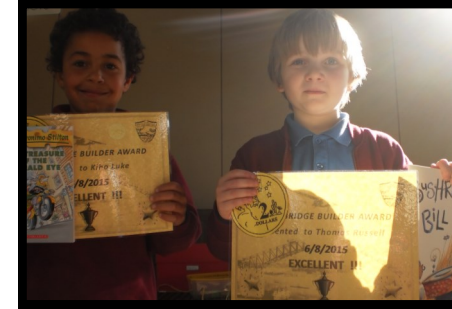
Ms Humphreys
and the Secretary
Of Education
Michele Bruniges
during her visit
last week.

K/1/2
students
experimenting
with water on
different
surfaces.



Awards

Week 4



Tell Them From Me parent survey

Frequently Asked Questions (parents and carers)

Centre for Education Statistics and Evaluation

1. What is the Partners in Learning parent survey?

The Partners in Learning parent survey is part of the *Tell Them From Me* suite of surveys on student engagement. The parent survey helps to clarify and strengthen the important relationship between parent and school.

The survey is designed to measure, assess and report insights at the school and system levels. The focus of this NSW survey is on student wellbeing, engagement and effective teaching practices.

2. What kind of questions will the survey ask?

The survey questions aim at understanding parents' perspectives on their child's experience at school, including teaching, communication, activities and practices at home and the school's support of learning and behaviour.

The survey will ask parents questions about:

Parents feel welcome	Parents are informed	Parents support learning at home	Parents participation at school
School supports positive behaviour	Safety	Inclusion	School supports learning

3. How have schools been selected to take part?

The survey is open for all NSW government schools to participate in at no cost to them. Your school has taken up this offer.

4. How will taking part in this survey benefit my child's school?

activities and practices at home, and parent views on the school's support of learning and behaviour all help build an accurate and timely picture that schools can use for practical improvements.

Data collected from the survey responses are quickly compiled into reports for school leaders. Principals can then use this information to help them identify emerging issues and plan for school improvement.

5. How does the parent survey relate to the student survey?

The parent survey is complementary to the *Tell Them From Me* student survey that your child may have been asked to participate in. These surveys are offered (along with a teacher survey) to ensure schools can capture the views of students, teachers and parents.

For more detail on each of the surveys, see the survey website: <http://surveys.cese.nsw.gov.au/>

6. What do I need to do to participate in the survey?

The survey typically takes 15 minutes and is conducted entirely online through a secure website operated by the survey developers, *The Learning Bar*. You will be provided with a link to complete the survey at home or your school may make computers available so that you can complete the survey during school hours.

7. Do I need to participate?

No, participation in the survey is optional. Whilst your

schools will be provided with a single username and password for all survey users. Where fewer than five parents respond to a question, the results will not be made available.

9. What sort of analysis will be done on the survey data?

Once the surveys are completed, reports are prepared and in most cases are available to schools within three business days. School leaders may use the data to better understand the experiences and views of parents at their school.

CESE will undertake state-wide analysis of the survey data in conjunction with existing student data held by the Department,

student outcomes. This supports the Department's continuing focus on quality teaching and leadership. The data will be retained for future analysis to help us better understand the nature of student engagement and wellbeing over time.

10. When will the Partners in Learning survey happen?

The surveys will be conducted in all participating schools between Monday 17th August (Week 6, Term 3) and Friday 16th October 2015 (Week 2, Term 4).

What is CESE?

The Centre for Education Statistics and Evaluation (CESE) is part of the Department of Education and Communities, within the Office of Education.

CESE has been established to improve the effectiveness, efficiency and accountability of education in New South Wales. CESE will identify and share what works, creating new opportunities to improve teaching and learning across all of education.

More information about CESE is available at: www.cese.nsw.gov.au

What is *The Learning Bar*?

The Learning Bar is a Canadian education company that specialises in school surveys for both primary and secondary students. Its survey, *Tell Them From Me*, is the largest national school survey in Canada, used in nine of Canada's ten provinces. More than 2,600 schools and 1.7 million Canadian students have participated in the survey over the last nine years.

The Learning Bar is led by Dr J Douglas Willms. Dr Willms is a Professor and Director of the Canadian Research Institute for Social Policy at the University of New Brunswick, and holds the Canada Research Chair in Literacy and Human Development. Dr Willms led the development of questions on student engagement for the OECD's Programme for International Student Assessment (PISA).