



FALLS CREEK PUBLIC SCHOOL

## TALKABOUT

Phone: 4447 8243 Fax: 4447 8023

E-mail: [fallscreek-p.school@det.nsw.edu.au](mailto:fallscreek-p.school@det.nsw.edu.au) Web: [fallscreek-p.schools.nsw.edu.au](http://fallscreek-p.schools.nsw.edu.au)

**Term 2 - Week 3**

**Wednesday 11 May 2016**

## PRINCIPAL'S REPORT

It is with great pleasure that I am writing my first Principal's Report for Falls Creek Public School. I am very excited about the year ahead and I look forward to getting to know the students, families and staff and working with the whole school community to help provide the very best education for our students in a happy and productive school environment. I am particularly keen to meet parents at the P&C meeting this Thursday evening, 12 May, at 6.15pm. I am hoping that as many parents as possible will attend to share their ideas for making this school the best it can be. Please feel free to speak to me about any concerns you may have at any time by making an appointment through the office. I look forward to meeting you.

**NAPLAN:** NAPLAN assessments are underway with the Year 3 and 5 students showing great commitment to doing their best. They completed the Language and Writing components on Tuesday, Reading today (Wednesday) and will complete the Numeracy component on Thursday.

**Solid State Circus Performance:** We have been lucky to secure a booking for a performance by



Solid State Circus for next Thursday, 19 May, at a cost of \$3 per student or \$5 per family (which has been subsidised by the school). They are a comedy acrobatics troupe who present an array of circus skills, including mini-tramp, juggling and high level acrobatics with a healthy mind, healthy body message. We are hoping to begin some circus skills activities for Falls Creek students in the near future so this should be a great introduction for them.

**Assembly:** There will be an assembly this Thursday at 2:15pm as well as next Thursday 19 May.

*Deb Sansom*

## **K/2 NEWS**

In Maths K/2 are sorting and describing familiar 3D objects, including cones, cubes, cylinders, spheres and prisms.

In English we are continuing to share Joy Cowley's big book stories and discussing the characters, punctuation and grammar features.

*Ms Porteous*

## **3/6 NEWS**

Welcome to Mrs Sansom. The children enjoyed meeting her and sharing some of the work they were doing in class.

This week has been all about NAPLAN and I'm sure Years 3 and 5 will breathe a sigh of relief on Thursday afternoon. Years 4 and 6 have been benefitting from smaller group activities. The next few weeks we will be looking at addition and subtraction strategies used to solve word problems in maths and using the skill of predicting to answer comprehension questions. In English, we will also be further developing our writing of narratives.

Next week we will be back to homework sheets so look out for them on Monday. Only 7 children handed their work in last week :- {

*Keep in touch,*

*Lyn*

## **MS CULLEN**

This week during Science and Technology, K/2 are continuing to explore our school grounds and observing a range of objects and researching what materials they are made of (i.e. wood, metal etc.). 3/6 are continuing to study solids and liquids and are observing the before and after effects of heat. During Creative Arts, both classes are exploring their drama skills.

## **SPORT NEWS**

We had a terrific FISST Cross Country Day last Thursday and the 19 children who attended from our school did us proud.

They were well behaved and tried hard when competing in their events. Many children did so well they will be going to the District Carnival !!

Thanks again to the parents who transported children. It was great to have such an enthusiastic cheer squad.

The children who will be representing our school at the District Carnival will receive their notes as soon as I am notified.

We will begin practising athletics this week. The FISST Carnival is in week 10, Wednesday 29 June which will be here before we know it.

*Lyn*

## CANTEEN ROSTER



Tuesday 17 May - Kirsten Crowell and Kristy Robinson

Tuesday 24 May - Sue Lightowlers and Tara Malone

---

## BOOKFAIR

### NEXT WEEK !!!!

**WHEN:**            **Week 4, 16 – 19 May**  
**8.30am – 9am & 2.30pm – 3.30pm**



**WHERE:**        **School Library**

The children will be visiting the Bookfair with their class and making a wish list.

We are holding a colouring competition for each year and the winners will receive a book prize from the fair. Children can bring the money for their book in an envelope and hand it to me.

*Lyn Brown.*

---

## UNIFORMS

If you would like to purchase uniforms please come before or after school Monday to Wednesday. Due to my reduction in hours I will no longer be available Thursday and Friday. Alternately you can send in your order with your child. If anyone is interested in making the girls culottes and winter/summer uniforms please contact me at the office.

*Karen*

## COMMUNITY NEWS

### Stewart House 2016 Donation Drive

Thank you to those students who have returned their envelope for the Stewart House Donation Drive. It's not too late for your chance to win a family holiday valued at \$4000 to a destination of your choice just put \$2 into the envelope, complete your details and bring it back to the office before Monday 16 May 2016.



### VACANCIES AVAILABLE

The Central Shoalhaven Mobile Preschool is a Community Based not for profit organisation operating for 38 years in the Shoalhaven area.

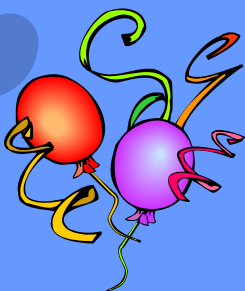
We provide educational programs designed for preschool children aged between 3 - 5 years, by fully qualified staff in a caring environment. Allow your child to make new friends within the local area. Subsidy available.

We operate from Falls Creek Public School Hall on Tuesdays of the school term.

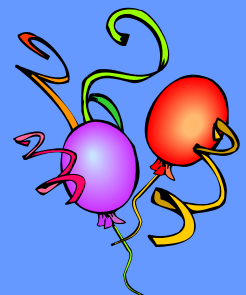
**PRESCHOOL HOURS:** 9.00am - 3.00pm

**ADDITIONAL HOURS:** 8.00am - 9.00am

All enquiries please phone our office on **44230571/0412928095** or call in at our venue.



# Happy Birthday!



**Happy Birthday to the following students who  
celebrate their birthday in May**

<b>6 May</b>	<b>Dejan Sankovic</b>
<b>14 May</b>	<b>Angus Findlay</b>

# For your attention

## Changes to bus pass application

### for more information call 131500



#### Want to know more?

For more information visit [transportnsw.info/school-students](http://transportnsw.info/school-students) or call 131 500

For help in your language, call the Translating and Interpreting Service (TIS) on 131 450.

يمكنك الاتصال بخدمة الترجمة التفسيرية والخطية (TIS) على الرقم 131 450 للحصول على المساعدة بلغتك.

如果您需要中文帮助，您可以拨打笔译和传译服务 Translating and Interpreting Services (TIS) 的电话 131 450。

Appelez le Service de traduction et d'interprétation ou TIS (Translating & Interpreting Services) au 131 450 pour demander de l'assistance dans votre langue.

Um Hilfe in Ihrer Sprache zu erhalten, rufen Sie den Übersetzer- und Dolmetscherdienst unter 131 450 an.

Για βοήθεια στα ελληνικά, καλέστε τις υπηρεσίες μετάφρασης και διερμηνείας (TIS) στο 131 450.

Per ricevere assistenza in italiano, chiamate il Servizio Traduttori e Interpreti (TIS) al numero 131 450.

あなたの母国語での補助は、電話131 450の翻訳通訳サービスにおかけ下さい。

한국어로 도움을 원하시면, 통번역 서비스 (TIS) 131 450 번으로 전화하십시오.

Para obtener más información en español, llame al Servicio de traducción e interpretación (Translating and Interpreting Services), al 131 450.

Muốn được giúp đỡ bằng tiếng Việt, quý vị gọi cho Dịch vụ Thông Phiên dịch (TIS) qua số 131 450.

## 2016/17

## Rural and regional School Travel Passes



- Your child may be eligible for free travel between home and school
- After 12 May 2016 you need to apply online for school travel passes

OP&3\_DL0416



## What's new

From 12 May 2016, applications for school travel passes in rural and regional NSW will need to be completed online instead of using paper forms.

This change makes it easier to apply, as you only need to complete one form that covers all situations, including journeys that involve multiple transport operators or modes of transport.

It's also easier for schools and bus operators, as Transport for NSW will now handle the applications.

This change only affects the application process; no changes to any public transport services are planned.

## Who can apply?

To be eligible for a school travel pass, students may need to live a minimum distance from their school:

### Years K-2 (Infants)

There's no minimum distance.

### Years 3-6 (Primary)

1.6km straight line distance or 2.3km walking.

### Years 7-12 (Secondary)

2.0km straight line distance or 2.9km walking.

## Who needs to apply

Most students who already have a school travel pass in 2016 won't need to re-apply for next year.

However, you need to update student details online if the student:

- Is moving from Year 2 to Year 3
- Is moving from Year 6 to Year 7
- Is changing schools or campuses
- Is changing address

## How to update your details

If the student already has a school travel pass and their address, school or name changes, or the student is entering Years 3 or 7, you will need to update your details at [apps.transport.nsw.gov.au/ssts/updatedetails](http://apps.transport.nsw.gov.au/ssts/updatedetails).

## How to apply for a new travel pass

### Applications for 2017 open from the start of Term 4, 2016.

#### Step 1

Once you have confirmed your 2017 school enrolment, complete the online application form at [transportnsw.info/school-students](http://transportnsw.info/school-students), nominating your home address and which bus company or transport operator the student needs to travel between home and school.

#### Step 2

Print, sign and date the completed application, then return it to the student's school for endorsement.

#### Step 3

The school then sends the endorsed application to Transport for NSW. You will receive an email confirming the outcome of your application. If the application is approved, Transport for NSW will inform your local bus or transport operator who will send a school travel pass to the student's school, or in some cases, to the student's address.

A parent or guardian must apply for students 15 years and under. Students 16 years and over must apply for themselves.

## Frequently asked questions

### Can I still apply using a paper form?

Carbon copy forms are no longer being accepted after Term 2, 2016. To download a paper form visit [apps.transport.nsw.gov.au/ssts](http://apps.transport.nsw.gov.au/ssts).

### How can I apply if I don't have internet access?

Call 131 500 for assistance with your application.

### Is a school travel pass valid outside school hours?

School travel passes are only for travel to and from school. So for travel after hours, on weekends or during school holidays, students will need to purchase a ticket.

### What if there's no public transport in my area?

In areas where there is no public transport, eligible NSW residents may receive a subsidy for transporting the student to school by private vehicle. For details visit [transportnsw.info/school-students](http://transportnsw.info/school-students).

### How do I apply if the student is in a shared parenting situation and needs to travel from two addresses?

Each parent (or the student if aged 16 or over) needs to make a separate application for each address. The same eligibility criteria apply.

